

Mobile Viewer Installation

SYSTEM REQUIREMENTS :

1. STORAGE SPACE : At least 1MB
2. MEMORY : At least 6 MB; suggest 10MB
3. SMART PHONE or PDA : Support Microsoft Windows Mobile or WinCE as following.
 - a. Windows Mobile 5
 - b. Windows Mobile 2003 SE
 - c. Windows Mobile 2003
 - d. WinCE 4.0 or above.

IMAGE TRANSMISSION METHODS : (Depend on SMART PHONE or PDA)

1. GPRS
2. 3G (WCDMA...)
3. 3.5G (HSDPA...)
4. USB LINK
5. WIFI (802.11b / 802.11g ...)
6. Bluetooth
7. Infrared

EXECUTION PROGRAM : (MOBILE_VIEWER.exe)

This program do not required to install in PC or PDA. Please save "MOBILE_VIEWER.exe" on SMART PHONE or PDA via USB Link, Memory Cards, WIFI, Bluetooth, or Infrared transmissions and so on. Then, click on "MOBILE_VIEWER.exe" to execute the program.

QUICK GUIDE

Build new stie:

1. Click "Site".
2. Click "Manage".
3. Click "New"
4. Please key in Name, IP, Port, Account, Password, etc.
5. Click "OK"

Build 3.5G / 3G / GPRS link:

1. Click "Operate"
2. Click "GPRS / 3G"
3. If connection success, H, 3G, or G tag will appear on the top of the screen. (H means 3.5G of HSDPA, 3G means 3G of WCDMA, G means 2.5G of GPRS)

Surveillance:

1. Please build 3G/GPRS link before surveillance via 3.5G/3G/GPRS.
2. Click "site"
3. Select site on the site list.
4. Click "Select"

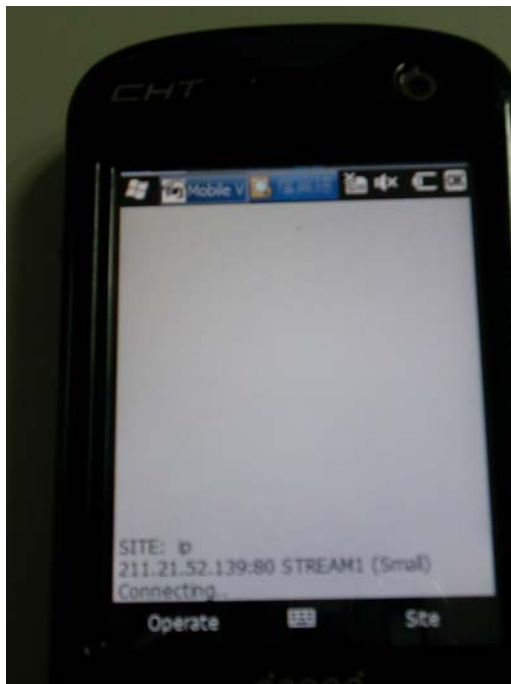
Site Management:

1. Click "Site"
2. Select site on the site list
3. Click "Manage"
4. Edit Name, IP, Port, Account, Password, etc
5. Click "OK"

MAIN MANU :

There are 3 main menus, including Live View, Site List, and Site Data.

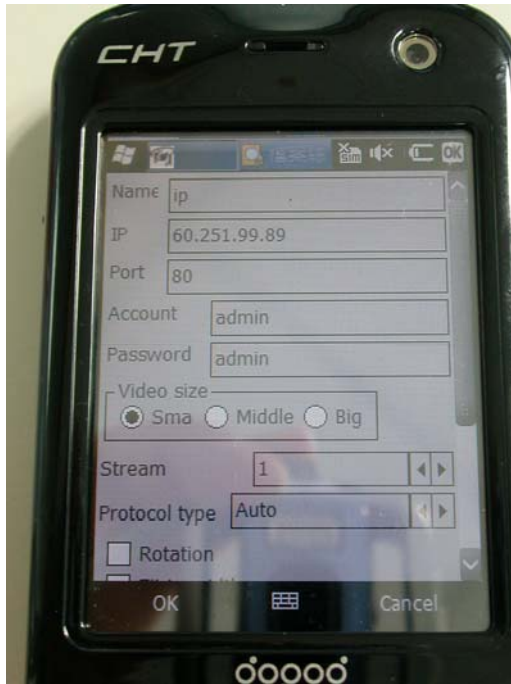
1. Live View (main screen)



2. Site List



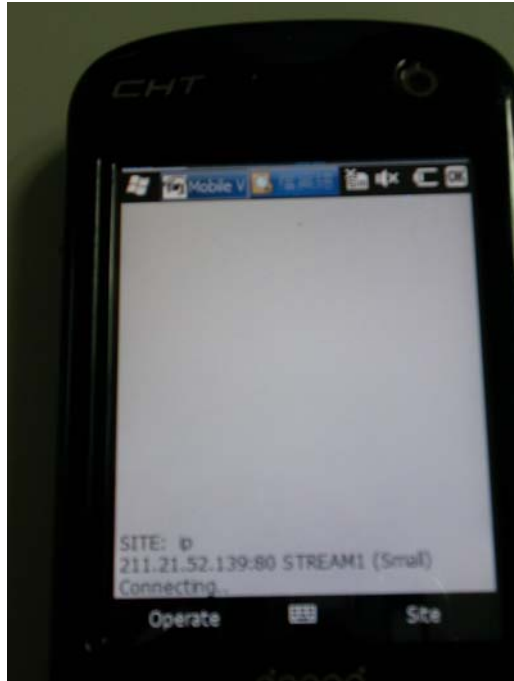
3. Site Data



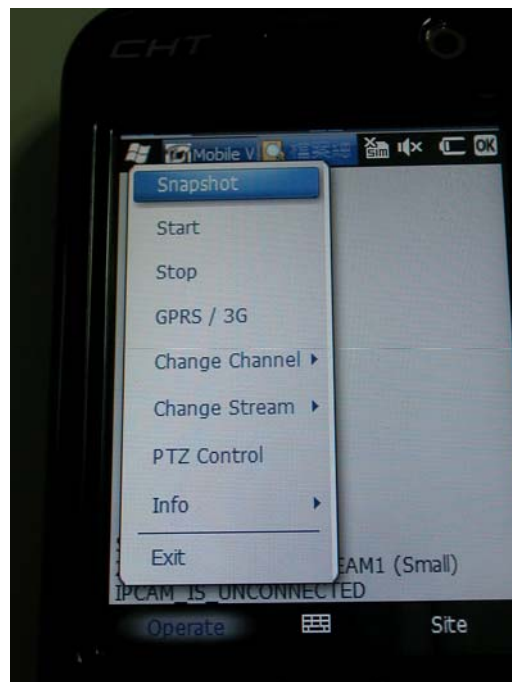
Menu :

In the bottom of each main menu, there are two Submenus.
Each main menu can call another submenu or screen.

1. Live view screen

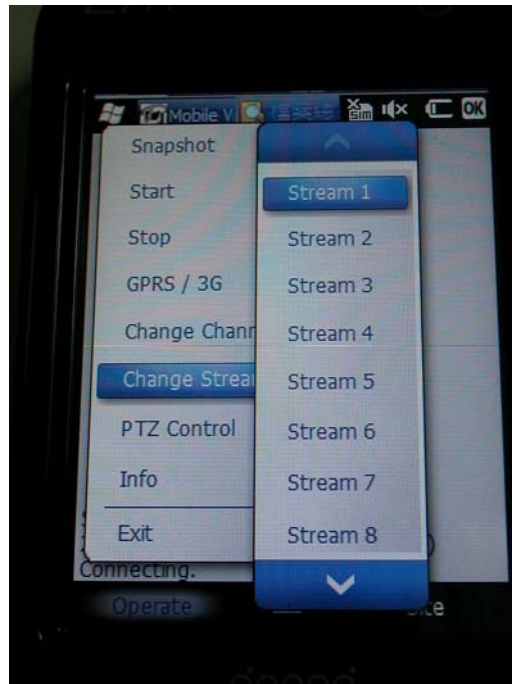


Operate : On click can call submenu

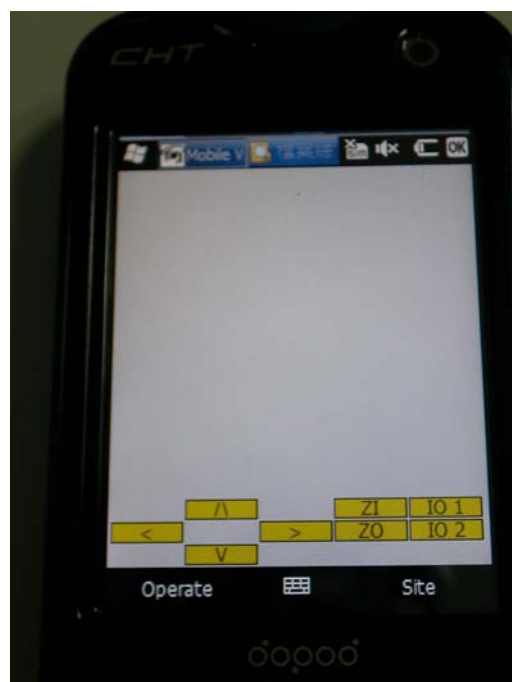


a. **Snapshot** (save the picture as .jpeg files)

- b. [Start](#) (Enable the image transmissions methods, including USB Link, WIFI, Bluetooth, and Infrared).
- c. [Stop](#) (Disable the image transmission methods, including USB Link, WIFI, Bluetooth, and Infrared).
- d. [GPRS / 3G](#) (Enable the image transmission method of GPRS or 3G).
- e. [Change Stream](#) (switch DVR channels).



[PTZ Control](#) (Call PTZ control interface)



Info :



Show (show the information))

Hide (hide the information)

Exit

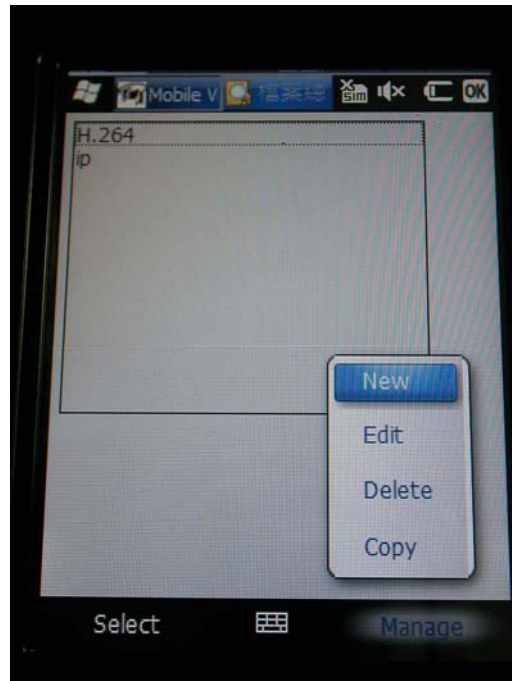
Site(Go to Site List)

2. Site list screen:



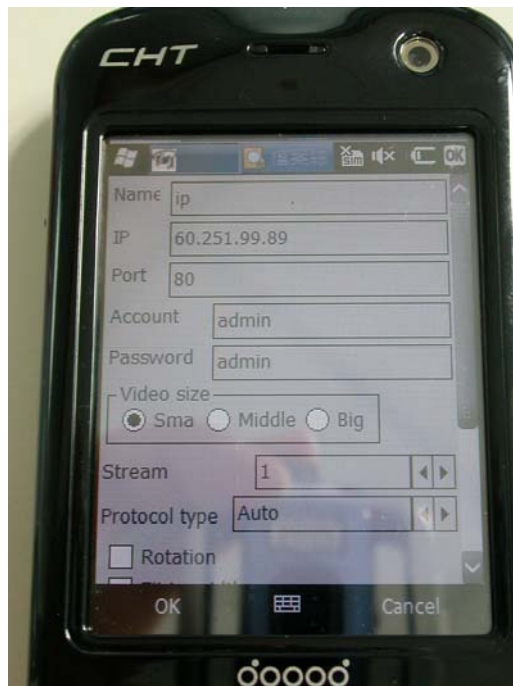
[Select](#) (Get back to Live view by click on a selected site).

[Manage](#)(Call submenu to configure)



1. [New](#) (Add a new site and it will switch to "Site Data" menu).
2. [Edit](#) (Switch to "Site Data". The user can edit the information).
3. [Delete](#) (Delete a selected site)
4. [Copy](#)(Copy a selected site)

3.Site data



1. **OK** (Save the information and it will switch to Site List).
2. **Cancel** (Switch to Site List without saving the information).

Name Site Name.

IP IP Address or Domain Name.

Port Internet Port.

Account User Name.

Password Password.

Video Size The size of the video.

Rotation Rotate the video.

Stream Num In the Multi-Stream device, it is optional to switch the stream number.

Protocol Type There are different protocol type (Type 1 H-Protocol, Type 2 W-Protocol, Type 3 A-Protocol, Type 4 S-Protocol, Type 5 R-Protocol). The default is Auto.

Support mobile phone list

Smartphone

ASUS P525

Dopod CHT 9000/ 9100

Dopod 900/818/595/586w/586/577w/575/565

Motorola MPX220

WINII S747

PDA

ASUS ALL (A716/A620/A620BT/A730/A730W...)

Dell Axim X50 / X51

HP iPAQ hx2700 Series

HW6365/HW6515/HX2200/HX4700